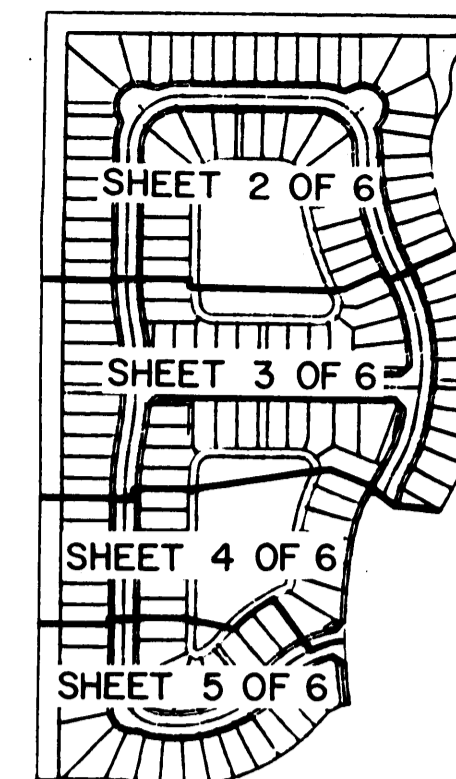


A PLAT OF PARCEL 62 AT THE MEADOWS

BEING PLAT NO. 54 OF MARTIN DOWNS A P.U.D.
LYING IN SECTION 12, TOWNSHIP 38 SOUTH, RANGE 40 EAST,
MARTIN COUNTY, FLORIDA.

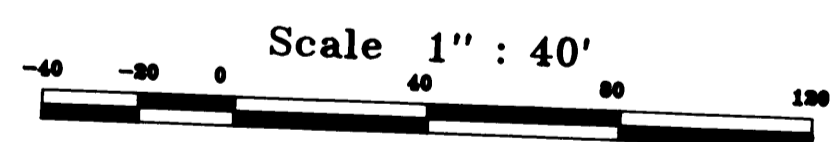
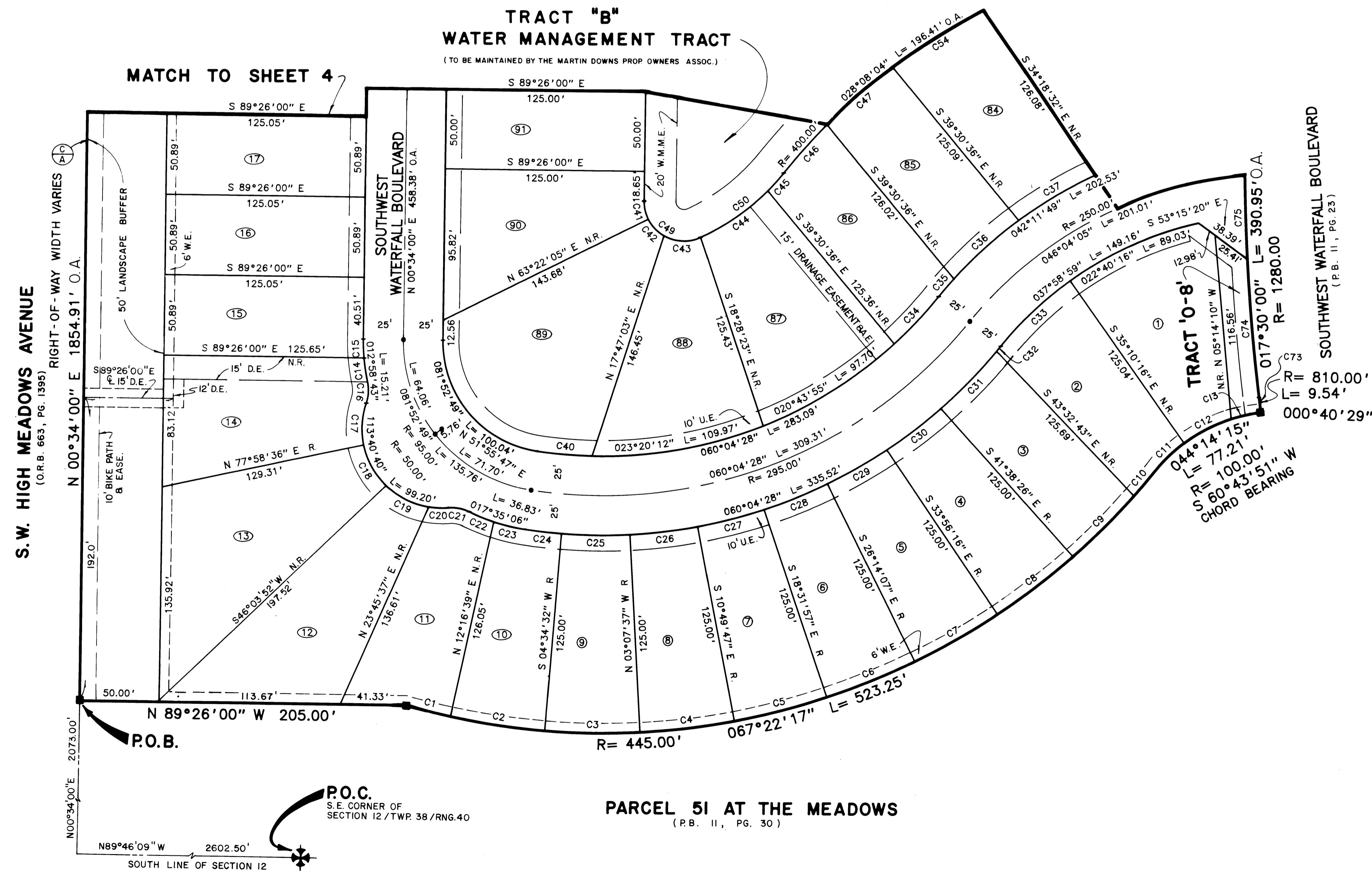
SHEET 5 OF 6

AUGUST, 1989.



KEY MAP
N.T.S.

I, MARSHA STILLER, CLERK OF THE CIRCUIT COURT OF MARTIN COUNTY, FLORIDA, HEREBY CERTIFY THAT THIS PLAT WAS FILED FOR RECORD IN PLAT BOOK 12, PAGE 17, MARTIN COUNTY, FLORIDA, PUBLIC RECORDS, THIS DAY OF _____, A.D. 19____. MARSHA STILLER, CLERK OF CIRCUIT COURT MARTIN COUNTY, FLORIDA
BY: _____ DEPUTY CLERK
FILE NO. _____



RECORDED
INDEXED
AUG 23 1989
MARTIN COUNTY

Landmark Surveying & Mapping Inc.
1830 FOREST HILL BOULEVARD
PH. (305)433-5405 SUITE 200 W.P.B. FLORIDA

PARCEL 62 AT THE MEADOWS